

I-STAR II

I-STAR II 8 0.4hp / I-STAR II 11 0.5 hp
I-STAR II 15 0.75hp / I-STAR II 19 1.0 hp
I-STAR II 25 1.5hp / I-STAR II 30 2.0 hp



- DE Pumpendatenblatt
- EN Data sheet
- FR Fiche technique pompe
- NL Pompgegevens
- IT Documentazione pompa
- ES Ficha técnica de la bomba



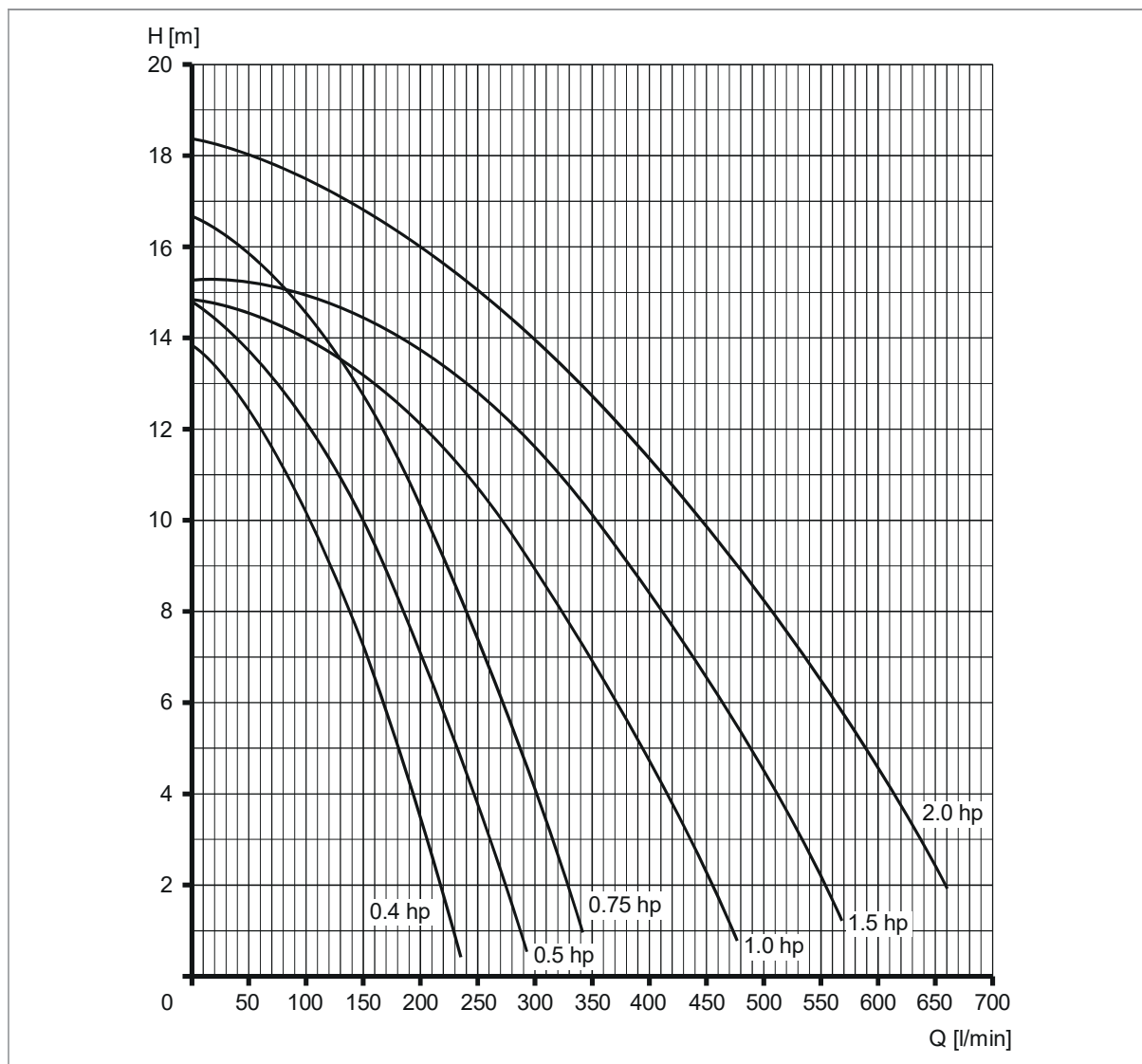
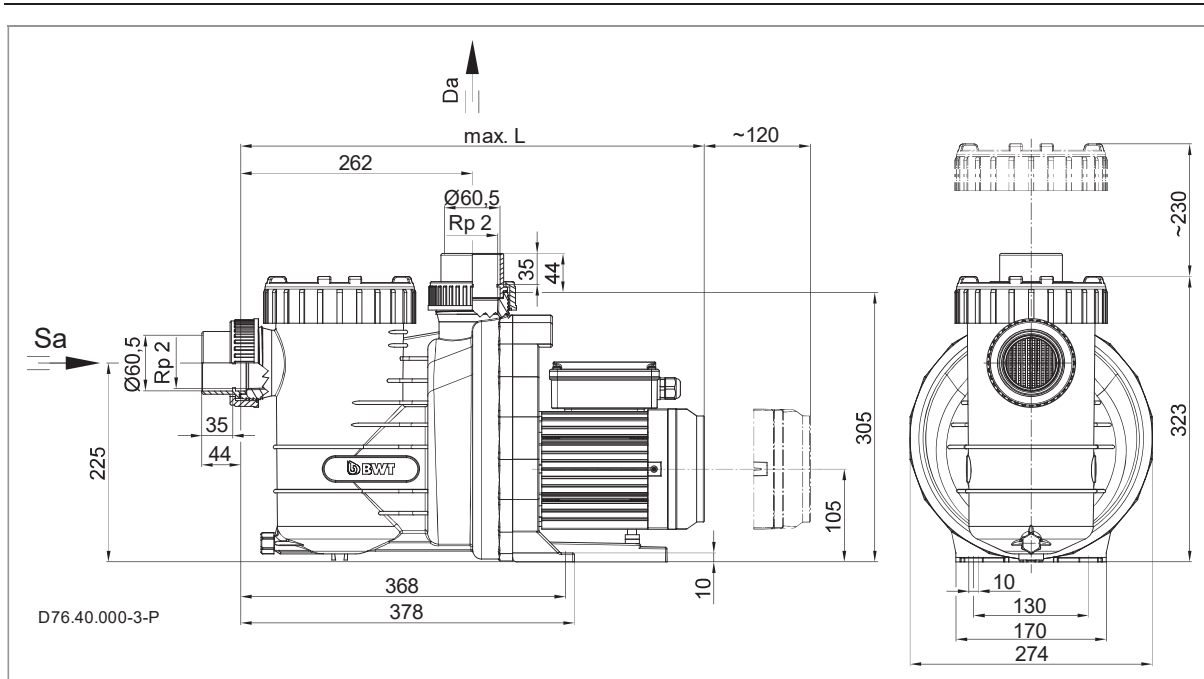
BWT Holding GmbH
Walter-Simmer-Straße 4
A-5310 Mondsee
E-Mail: office@bwt.com
T.: +43 (0) 6232 5011-0
F.: +43 (0) 6232 4058

Alle Rechte vorbehalten.

Inhalte dürfen ohne schriftliche Zustimmung von BWT Holding GmbH weder verbreitet, vervielfältigt, bearbeitet noch an Dritte weitergegeben werden.

Dieses Dokument sowie alle Dokumente im Anhang unterliegen keinem Änderungsdienst!

Technische Änderungen vorbehalten!

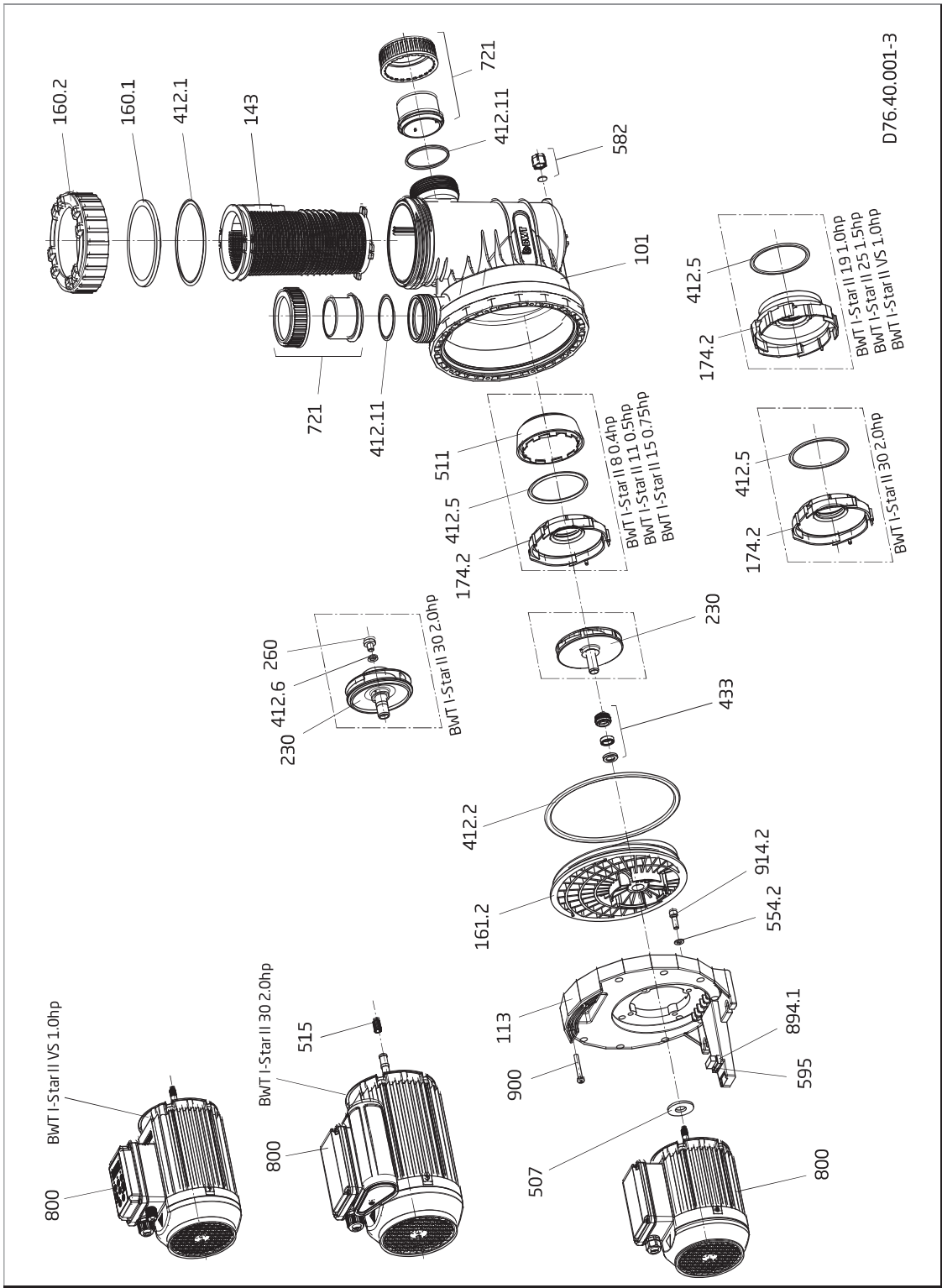


| TD 50 Hz | Sa [mm/Rp] | Da [mm/Rp] | d-Saug [inch] | d-Druck [inch] | max. L [mm] |
|-------------------------|------------|------------|---------------|----------------|-------------|
| BWT I-Star II 8 0.4hp | 60.5/2 | 60.5/2 | 2 | 2 | 525 |
| BWT I-Star II 11 0.5hp | 60.5/2 | 60.5/2 | 2 | 2 | 525 |
| BWT I-Star II 15 0.75hp | 60.5/2 | 60.5/2 | 2 | 2 | 550 |
| BWT I-Star II 19 1.0hp | 60.5/2 | 60.5/2 | 2 | 2 | 524 |
| BWT I-Star II 25 1.5hp | 60.5/2 | 60.5/2 | 2 | 2 | 542 |
| BWT I-Star II 30 2.0hp | 60.5/2 | 60.5/2 | 2 | 2 | 574 |

1~ 230 - 240 V

| TD 50 Hz | P ₁ [kW] | P ₂ [kW] | I [A] | Lpa ^(1m) [dB(A)] | Lwa [dB(A)] | m [kg] | WSK/PTC |
|-------------------------|---------------------|---------------------|-------|-----------------------------|-------------|--------|---------|
| BWT I-Star II 8 0.4hp | 0,60 | 0,30 | 2,60 | 57,6 | 66 | 11,2 | ●/○ |
| BWT I-Star II 11 0.5hp | 0,69 | 0,45 | 3,30 | 57,3 | 65 | 11,2 | ●/○ |
| BWT I-Star II 15 0.75hp | 1,02 | 0,65 | 4,20 | 58,0 | 66 | 12,6 | ●/○ |
| BWT I-Star II 19 1.0hp | 11,7 | 0,75 | 4,80 | 63,4 | 71 | 13,8 | ●/○ |
| BWT I-Star II 25 1.5hp | 1,65 | 1,10 | 6,20 | 65,6 | 74 | 15,4 | ●/○ |
| BWT I-Star II 30 2.0hp | 1,88 | 1,50 | 8,50 | 65,1 | 73 | 17,8 | ●/○ |

| TD 50 Hz | H _{max.} [m] | SP | Hs [m] | H _z [m] | IP | W-KI | n [min ⁻¹] | T [°C] | P-GHI [bar max.] |
|-------------------------|-----------------------|----|--------|--------------------|----|------|------------------------|--------|------------------|
| BWT I-Star II 8 0.4hp | 13,9 | ● | 3 | 3 | X5 | F | 2840 | 40(60) | 2.5 |
| BWT I-Star II 11 0.5hp | 14,9 | ● | 3 | 3 | X5 | F | 2840 | 40(60) | 2.5 |
| BWT I-Star II 15 0.75hp | 16,9 | ● | 3 | 3 | X5 | F | 2840 | 40(60) | 2.5 |
| BWT I-Star II 19 1.0hp | 14,8 | ● | 3 | 3 | X5 | F | 2840 | 40(60) | 2.5 |
| BWT I-Star II 25 1.5hp | 15,2 | ● | 3 | 3 | X5 | F | 2840 | 40(60) | 2.5 |
| BWT I-Star II 30 2.0hp | 18,5 | ● | 3 | 3 | X5 | F | 2840 | 40(60) | 2.5 |



| Teil Part | St Qty | Pumpe Pump | Benennung | Description | Artikel-Nr. article no. |
|-----------|--------|------------|--|---|-------------------------|
| 101 | 1 | all | Gehäuse kpl., grau | Housing cpl., grey | 290.1410.154 |
| 113 | 1 | all | Zwischengehäuse | Intermediate housing | 290.1411.300 |
| 143 | 1 | all | Saugsieb, weiß | Strainer basket, white | 290.1114.301 |
| 160.1 | 1 | all | Klarsichteinsatz, transparent | Transparent lid | 290.1116.010 |
| 160.2 | 1 | all | Gewinding, magenta | Ring for lid, magenta | 290.1416.027 |
| 161.2 | 1 | 8 0.4hp | Dichtungsgehäuse | Gland housing | 290.1416.100 |
| | | 11 0.5hp | Dichtungsgehäuse | Gland housing | 290.1416.100 |
| | | 15 0.75hp | Dichtungsgehäuse | Gland housing | 290.1416.100 |
| | | 19 1.0hp | Dichtungsgehäuse | Gland housing | 290.1416.100 |
| | | 25 1.5hp | Dichtungsgehäuse | Gland housing | 290.1416.100 |
| | | 30 2.0hp | Dichtungsgehäuse | Gland housing | 290.1416.101 |
| | | VS 1.0hp | Dichtungsgehäuse | Gland housing | 290.1416.100 |
| 174.2 | 1 | 8 0.4hp | Leitschaufeleinsatz | Diffuser | 292.0117.420 |
| | | 11 0.5hp | Leitschaufeleinsatz | Diffuser | 292.0117.420 |
| | | 15 0.75hp | Leitschaufeleinsatz | Diffuser | 292.0117.420 |
| | | 19 1.0hp | Leitschaufeleinsatz | Diffuser | 292.1117.412 |
| | | 25 1.5hp | Leitschaufeleinsatz | Diffuser | 292.1117.412 |
| | | 30 2.0hp | Leitschaufeleinsatz | Diffuser | 292.1317.421 |
| | | VS 1.0hp | Leitschaufeleinsatz | Diffuser | 292.1117.412 |
| 230 | 1 | 8 0.4hp | Laufrad, d = 112 mm, b = 4,5 mm | Impeller, d = 112 mm, b = 4.5 mm | 292.1123.028 |
| | | 11 0.5hp | Laufrad, d = 112 mm, b = 6,5 mm | Impeller, d = 112 mm, b = 6.5 mm | 292.1123.029 |
| | | 15 0.75hp | Laufrad, d = 112 mm, b = 8,5 mm | Impeller, d = 112 mm, b = 8.5 mm | 292.1123.030 |
| | | 19 1.0hp | Laufrad, d = 112 mm, b = 9,5 mm | Impeller, d = 112 mm, b = 9.5 mm | 292.0723.059 |
| | | 25 1.5hp | Laufrad, d = 110 mm, b = 13,5 mm | Impeller, d = 110 mm, b = 13.5 mm | 292.0723.056 |
| | | 30 2.0hp | Laufrad, d = 115 mm, b = 13,5 mm | Impeller, d = 115 mm, b = 13.5 mm | 290.1423.006 |
| | | VS 1.0hp | Laufrad, d = 112 mm, b = 9,5 mm | Impeller, d = 112 mm, b = 9.5 mm | 292.0723.059 |
| 260 | 1 | 30 2.0hp | Laufradkappe, PP, M10x12 | Impeller hub cap, PP, M10x12 | 292.0326.000 |
| 412.1 | 1 | all | O-Ring, 137 x 5 mm | O-Ring, 137 x 5 mm | 292.1141.210 |
| 412.2 | 1 | all | O-Ring, 225 x 6 mm | O-Ring, 225 x 6 mm | 290.1441.220 |
| 412.5 | 1 | 8 0.4hp | O-Ring für Leitschaufeleinsatz 97,8 x 5,33 mm | O-Ring for diffuser 97,8 x 5,33 mm | 292.1141.255 |
| | | 11 0.5hp | O-Ring für Leitschaufeleinsatz 97,8 x 5,33 mm | O-Ring for diffuser 97,8 x 5,33 mm | 292.1141.255 |
| | | 15 0.75hp | O-Ring für Leitschaufeleinsatz 97,8 x 5,33 mm | O-Ring for diffuser 97,8 x 5,33 mm | 292.1141.255 |
| | | 19 1.0hp | O-Ring für Leitschaufeleinsatz 90 x 5 mm | O-Ring for diffuser 90 x 5 mm | 292.0141.210 |
| | | 25 1.5hp | O-Ring für Leitschaufeleinsatz 90 x 5 mm | O-Ring for diffuser 90 x 5 mm | 292.0141.210 |
| | | 30 2.0hp | O-Ring für Leitschaufeleinsatz 90 x 5 mm | O-Ring for diffuser 90 x 5 mm | 292.0141.210 |
| | | VS 1.0hp | O-Ring für Leitschaufeleinsatz 90 x 5 mm | O-Ring for diffuser 90 x 5 mm | 292.0141.210 |
| 412.6 | 1 | 30 2.0 hp | O-Ring für Laufradkappe, 11 x 2,5 mm | O-Ring for impeller hub cap, 11 x 2,5 mm | 292.0141.241 |
| 412.11 | 2 | all | O-Ring für Rohranschlüsse, 68 x 3,5 mm | O-Ring for inlet/outlet connections, 68 x 3,5 mm | 292.1441.210 |
| 433 | 1 | 8 0.4hp | Gleitringdichtung kpl., 14mm | Mechanical seal cpl., 14 mm | 292.0143.320 |
| | | 11 0.5hp | Gleitringdichtung kpl., 14mm | Mechanical seal cpl., 14 mm | 292.0143.320 |
| | | 15 0.75hp | Gleitringdichtung kpl., 14mm | Mechanical seal cpl., 14 mm | 292.0143.320 |
| | | 19 1.0hp | Gleitringdichtung kpl., 14mm | Mechanical seal cpl., 14 mm | 292.0143.320 |
| | | 25 1.5hp | Gleitringdichtung kpl., 14mm | Mechanical seal cpl., 14 mm | 292.0143.320 |
| | | 30 2.0hp | Gleitringdichtung kpl., 20mm | Mechanical seal cpl., 20 mm | 292.0343.318 |
| | | VS 1.0hp | Gleitringdichtung kpl., 14mm | Mechanical seal cpl., 14 mm | 292.0143.320 |
| 507 | 1 | 8 0.4hp | Spritzring, 12,2 x 45 x 4 mm | Splash ring, 12.2 x 45 x 4 mm | 292.0850.700 |
| | | 11 0.5hp | Spritzring, 12,2 x 45 x 4 mm | Splash ring, 12.2 x 45 x 4 mm | 292.0850.700 |
| | | 15 0.75hp | Spritzring, 12,2 x 45 x 4 mm | Splash ring, 12.2 x 45 x 4 mm | 292.0850.700 |
| | | 19 1.0hp | Spritzring, 12,2 x 45 x 4 mm | Splash ring, 12.2 x 45 x 4 mm | 292.0850.700 |
| | | 25 1.5hp | Spritzring, 12,2 x 45 x 4 mm | Splash ring, 12.2 x 45 x 4 mm | 292.0850.700 |
| | | 30 2.0hp | Spritzring, 16 x 45 x 4 mm | Splash ring, 16 x 45 x 4 mm | 292.0850.701 |
| | | VS 1.0hp | Spritzring, 12,5 x 45 x 4 mm | Splash ring, 12.5 x 45 x 4 mm | 292.1150.700 |
| 511 | 1 | 8 0.4hp | Zentrierring | Centring ring | 292.1151.105 |
| | | 11 0.5hp | Zentrierring | Centring ring | 292.1151.105 |
| | | 15 0.75hp | Zentrierring | Centring ring | 292.1151.105 |
| 515 | 2 | 30 2.0hp | Toleranzring | Star-ring | 292.0651.510 |
| 554.2 | 4 | all | Unterlegscheibe, d = 8,4 mm, A 2 | Washer, d = 8,4 mm, A 2 | 587.1250.802 |
| 582 | 1 | all | Verschlusskappe, schwarz, mit NBR-Dichtung | Drain cap, black, with NBR gasket | 292.1658.203 |

| | | | | | |
|--------------|----|-----------|---|---|---------------|
| 595 | 1 | all | Gummipuffer, 10 x 12,5 x 27 mm | Rubber buffer, 10 x 12.5 x 27 mm | 290.1259.500 |
| 721 | 2 | all | Überwurfmutter, für Bundbuchse, d = 63 + 75 mm, schwarz | Union nut for glue socket dia 63 + 75 mm, black | 292.1472.111 |
| | 2 | all | Bundbuchse d-innen = 60,3 mm, schwarz | Glue socket dia-inner = 60.3 mm, black | 292.1472.145 |
| 800 | 1 | 8 0.4hp | We-Motor 0,30 kW, 0.40 hp | 1~ motor 0.30 kW, 0.40 hp | 60210300-01AB |
| | | 11 0.5hp | We-Motor 0,45 kW, 0.50 hp | 1~ motor 0.45 kW, 0.50 hp | 60210450-01AB |
| | | 15 0.75hp | We-Motor 0,65 kW, 0.75 hp | 1~ motor 0.65 kW, 0.75 hp | 60210650-01AB |
| | | 19 1.0hp | We-Motor 0,75 kW, 1.00 hp | 1~ motor 0.75 kW, 1.00 hp | 70210750-01AB |
| | | 25 1.5hp | We-Motor 1,10 kW, 1.50 hp | 1~ motor 1.10 kW, 1.50 hp | 70211100-01AB |
| | | 30 2.0hp | We-Motor 1,50 kW, 2.00 hp | 1~ motor 1.50 kW, 2.00 hp | 70211500-01AB |
| | | VS 1.0hp | We-Motor 0,75 kW, VS, 1.00 hp | 1~ motor 0.75 kW, VS, 1.00 hp | 7B830750-01AB |
| 894.1 | 4 | 8 0.4hp | Adapter für Motorfuß | Adapter for motor foot | 292.0389.410 |
| | 4 | 11 0.5hp | Adapter für Motorfuß | Adapter for motor foot | |
| | 4 | 15 0.75hp | Adapter für Motorfuß | Adapter for motor foot | |
| | 2 | 19 1.0hp | Adapter für Motorfuß | Adapter for motor foot | |
| | 2 | 25 1.5hp | Adapter für Motorfuß | Adapter for motor foot | |
| | 3 | 30 2.0hp | Adapter für Motorfuß | Adapter for motor foot | |
| | 2 | VS 1.0hp | Adapter für Motorfuß | Adapter for motor foot | |
| 900 | 10 | all | Schneidschraube, 7 x 48,4 mm, A2 | Screw, 7 x 48.4 mm, A2 | 292.1690.002 |
| 914.2 | 4 | all | Innensechsk.-Schraube, M8x25, A2 | Hexagon socket screw, M8 x 25, A 2 | 587.9120.825 |
| 412.11 + 721 | 1 | all | Anschluss-Set kpl. | Connection set cpl. | 292.1472.147 |
| | 1 | all | Öffnungsriff, PP | Handle for rid ring lock, PP | 292.1157.700 |

I-STAR II

I-STAR II 8 0.4hp / I-STAR II 11 0.5 hp
I-STAR II 15 0.75hp / I-STAR II 19 1.0 hp
I-STAR II 25 1.5hp / I-STAR II 30 2.0 hp



EN Data sheet

Related Documentation

The additional information compiled in this data sheet must be kept together with the original operation manual for „Non-self-priming and self-priming pumps with/without plastic lanterns“ and must be accessible to the relevant personnel at all times.

| Glossary | |
|----------------------|--|
| TD | Technical data |
| Sa | Inlet connection |
| Da | Outlet connection |
| d-Saug | Recommended diameter of the suction line up to 5 m |
| d-Druck | Recommended diameter of the pressure line up to 5 m |
| max. L | Maximum length of the pump |
| D | Density |
| P ₁ | Power input |
| P ₂ | Power output |
| I | Rated current |
| Lpa _(1 m) | Sound pressure level at 1 m measured in accordance with DIN 45635 |
| Lwa | Acoustic capacity |
| m | Weight |
| WSK | Built-in or external overload switch |
| PTC | PTC resistor |
| H _{max.} | Total dynamic head |
| SP | Self-priming |
| Hs; Hz | Geodetic head between water level and pump |
| Hs | Total suction head |
| Hz | Total dynamic head with flooded suction |
| IP | Type of motor enclosure |
| W-KI | Class of insulation |
| n | Motor speed |
| P-GHI | 2.5 bar max. casing pressure/system pressure |
| T | Water temperature |
| ● | Yes |
| ○ | No |
| T/°C | Clarification of the max. water temperature 40 °C (60 °C): 40 °C = the max. water temperature allowed according to the GS approval. (60 °C) = the pump is designed to withstand a max. water temperature of 60 °C. |
| 1~/3~ | Suitable for continuous operation at 1~ 220 - 240 V ± 5% 3~ Y/Δ 380 - 420 V/220 - 240 V ± 5% 3~ Y/Δ 660 - 725 V/380 - 420 V ± 5% For standard voltage in accordance with DIN IEC 60038; DIN EN 60034 |

For special voltages and/or the 60 Hz version, the performance data can be taken from the pump name plate. If the values in these instructions are different to the values on the type plate, the values on the type plate must be used. With some special types or motors there is no GS approval – GS approval on pump name plate where applicable.

The following points refer to the related documentation!

Installing or removing the cover/strainer basket

